

STINGRAY
SYSTEM



STINGRAY BELT

SPECIFICATION SHEET

Stingray Belt - 25mm Webbing

SKU: SMB - 28.0grams

SKU: MMB - 30.5grams

SKU: LMB - 33.0grams

SKU: SBB - 25.6grams

SKU: MBB - 27.6grams

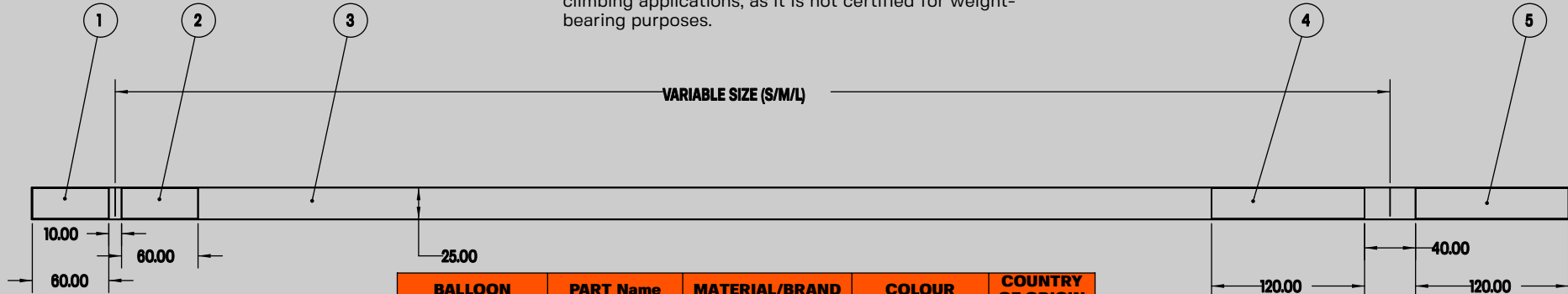
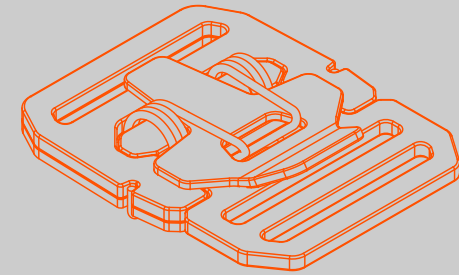
SKU: LBB - 29.6grams

OVERVIEW

The Stingray Belt represents a lightweight and minimalist quick-release belt solution. The inclusion of Velcro ends facilitates the swift detachment of the Stingray buckle, enabling easy threading through pant hoops. Additionally, the Velcro feature allows for convenient length adjustment to suit individual preferences.

IMPORTANT NOTICE:

Please be aware that this belt system is not intended for climbing applications, as it is not certified for weight-bearing purposes.



BALLOON	PART Name	MATERIAL/BRAND	COLOUR	COUNTRY OF ORIGIN
1	Hook 1	QWIK-TIE - Polyethylene Hook	BLACK	USA
2	Loop 1	QWIK-TIE - Nylon Loop	BLACK	USA
3	25mm Webbing	Polyester	BLACK	NZ
3	25mm Webbing	Nylon A-A-55301 T3	BLACK MULTICAM	USA
4	Loop 2	QWIK-TIE - Nylon Loop	BLACK	USA
5	Hook 2	QWIK-TIE - Polyethylene Hook	BLACK	USA
Stitching	Thread	TEX 080 Polyester Core - Cotton Wrapped	BLACK	-

SIZE	VARIABLE SIZE(CM)	ADJUSTMENT - Lower Limit	ADJUSTMENT - Upper Limit
S	80	75	85
M	90	85	95
L	100	95	105



NZ

REVISION: 1
JULY 2023
PAGE 1 OF 1



Disclaimer: Non-Copying Notice

The information and data contained in this drawing are intended solely for reference and informational purposes. All the content provided in this drawing is non-confidential and available for public use.

While you may use this drawing for your own reference or professional purposes, reproduction, distribution, or any other form of copying of this drawing, including its dimensions, specifications, and designs, is strictly prohibited without prior written consent.

Please be aware that unauthorized copying or usage of this drawing may infringe on intellectual property rights or may lead to legal implications.